

PART NUMBER: T0550LR/T0540LR
PRODUCT: Roof mount LED bracket
APPLICATION: 05-15 Tacoma

For Technically or install questions please contact info@n-fab.com

STOP! READ BEFORE CONTINUING!

THIS PART IS INTENDED TO BE PROFESSIONALLY INSTALLED BY A CERTIFIED TECHNICIAN. PLEASE READ ALL INSTRUCTIONS CAREFULLY AND COMPLETELY BEFORE BEGINNING INSTALLATION!

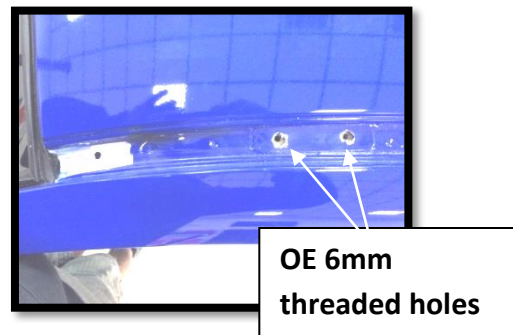
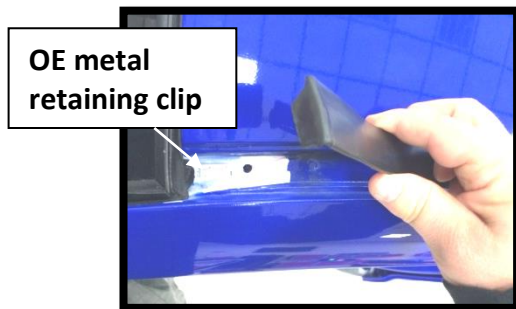
Note: Prt# T0550LR is designed for a 51.5" light mounting surface to mounting surface.

Prt# T0540LR is designed for 41 ¼" light mounting surface to mounting surface.

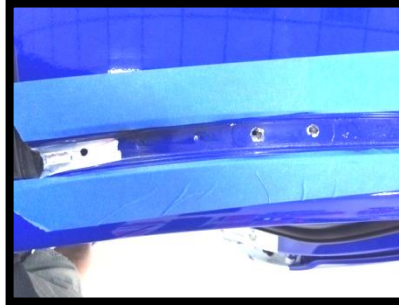
Parts Included	Qty
Roof mount Brackets	2
Hardware Pack :	1
6mm x 15mm sort nuts	2
6mm x 15mm Button head bolts	6
M12 poly washers	6
Sert-nut install tool	1

INSTALLTION:

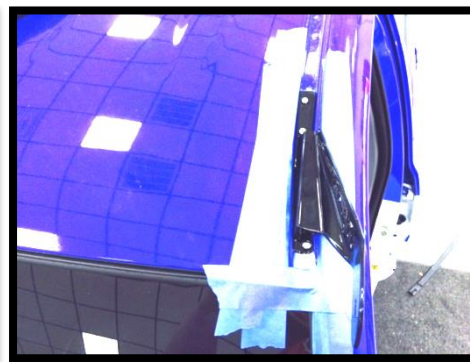
Step 1: Starting with the Driver side, use a small screw driver and lift up the rubber roof molding. There will be a metal clip next to the windshield. Pull back molding to expose the two OE 6mm threaded holes.



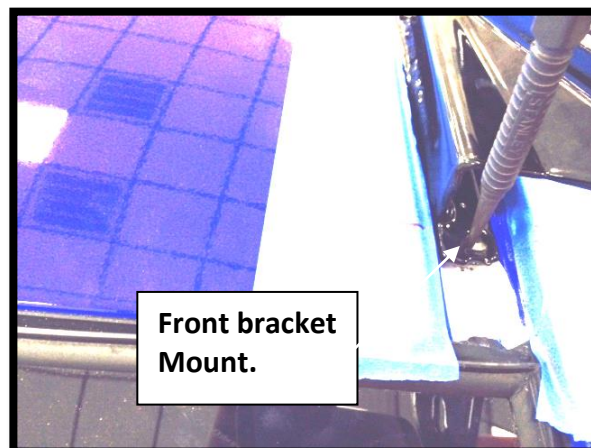
Step 2: Apply masking tape on both sides of the rain gutter. (2" wide)



Step 3: Install driver side bracket using the two 6mm x 15 button head bolts into the EO threaded holes. Only snug tight at this time.

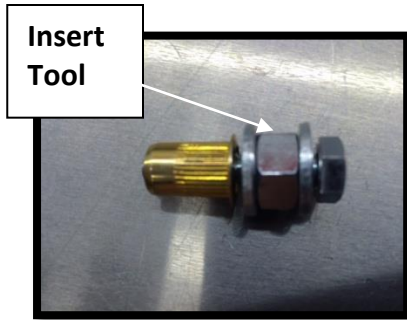


Step 4: Using a center punch, make a mark for the front mounting position through the bracket.

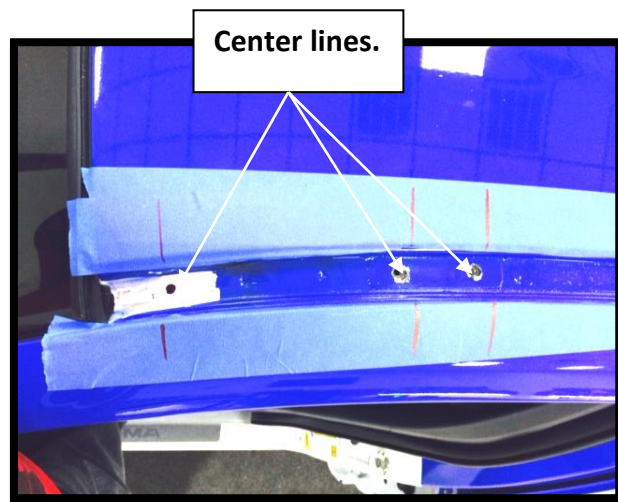
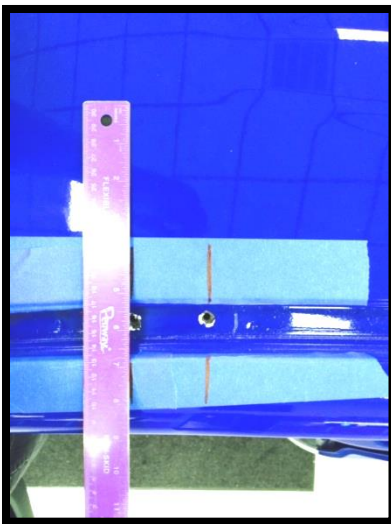


Step 5: Remove bracket and set aside. Next, drill hole using a pilot drill bit and then work up to a size " W " drill bit.

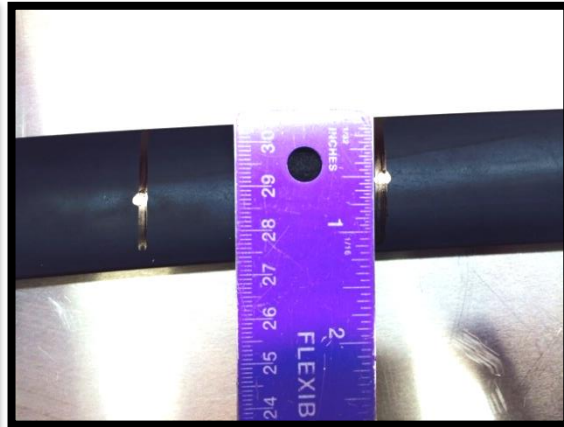
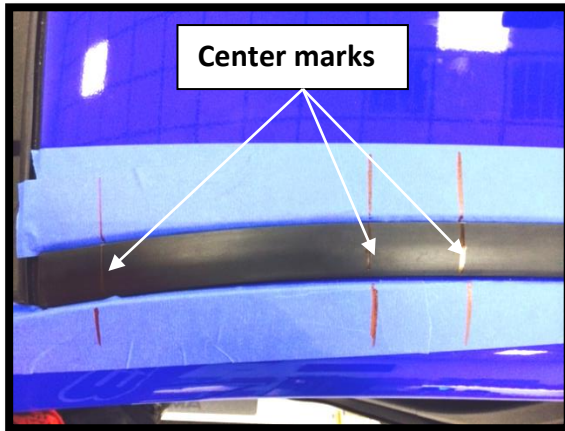
Step 6: Insert supplied sert-nut. Use provided tool to fasten sert-nut flush with the body by holding the nut with a 13mm wrench and turning bolt with a 10mm wrench until secure.



Step 7: Using a ruler, mark three center lines for each mounting position onto masking tape.



Step 8: Reinstall rubber molding, making sure the front is secure into the metal clip. Next, transfer the center lines onto the rubber molding and make a center mark.



Step 9: Remove molding and transfer to a flat surface. Using an 11/32 drill bit, drill out all three center holes in rubber molding and reinstall.

Step 10: Repeat steps 1-9 for passenger side.

Step 11: Mount light bar into both Roof Mount brackets to create an assembly.

Step 12: Carefully lift assembly into position aligning with mounting holes. Insert the six 6mmx15mm button head bolts into mounts and torque down all hardware. Your install is now complete.

