



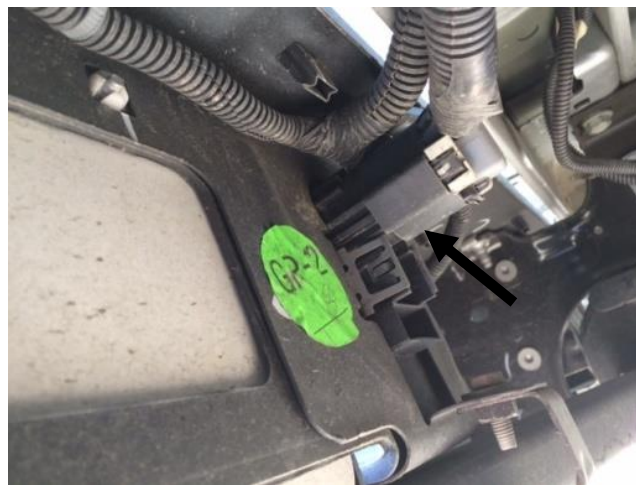
PART NUMBER: **C14RBSH**
PRODUCT: **REAR BUMPER WITH
FACTORY HITCH**
APPLICATION: **14-16 GMC/CHEVY
1500**

Parts Included:	Qty
Rear RBSH Bumper	1
Driver side bracket	1
Passenger side bracket	1
Hardware Pack	1
M10x40mm Hex Bolt	2
M10 Fender washer	4
M10 Nuts	2
½" x1 ½" Hex Bolt	4
½" Nuts	4
½" Fender washer	8
14mm Nut	2
½" USS flat washer	2



Rear Bumper Removal

Step 1: Unplug OEM trailer connector.

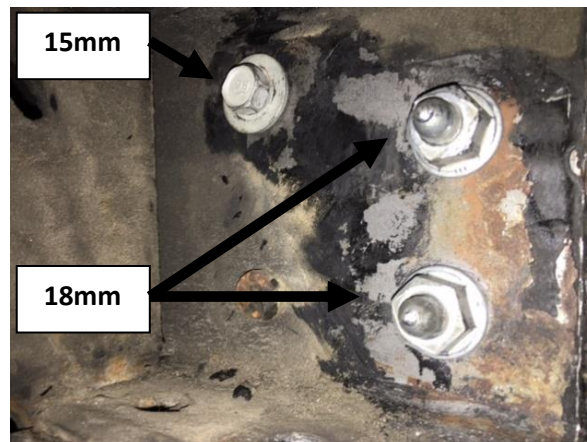


Step 2: Unplug sensor and tag light connector.



Step 3: Remove the OEM bolts behind license plate area using a 13mm socket.

Step 4: Remove the two OEM frame nuts with a 18mm socket and one OEM frame bolt with a 15mm socket. (Both sides) ***NOTE: The two 18mm nuts and bolts will be re-used in the installation.***



Step 5: Remove front bolt in receiver hitch with a 21mm socket. (Both sides)
NOTE: The nut is welded to the bumper bracket which will not be re-installed.

Step 6: Loosen two rear receiver mount bolts. Do not remove all the way.

Step 7: After receiver is loose, remove OEM bumper and set aside.



PART NUMBER: **C14RBSH**
PRODUCT: **REAR BUMPER WITH
FACTORY HITCH**
APPLICATION: **14-16 GMC/CHEVY
1500**

Step 8: Tighten rear receiver bolts. (Both sides)

Step 9: Re-install the two front receiver bolts and tighten using the supplied 14mm nuts and ½' USS fender washers.

Bumper Install

Step 1: Install the supplied driver and passenger side frame brackets using the OE 18mm nuts and bolts removed from **step 4** in the bumper removal. Use the supplied M10x40mm Hex head nut and washers for the rear mount. Do not fully tighten. (Both sides)



Step 2: Install the bumper to the Frame brackets using the supplied ½"x1 ½" Hex bolts, nuts and washers. Snug bolts enough to adjust.

Step 3: Carefully lower the tailgate to check clearance. ***NOTE: IT IS VERY IMPORTANT TO MAKE SURE THERE WILL BE NO CONTACT WITH THE TAILGATE AND BUMPER BEFORE TIGHTING.***

Step 4: Once tailgate clearance is confirmed and after final adjustment, tighten all hardware.

Step 5: Install license plate to the bumper tabs. ***NOTE: An aftermarket license plate light is recommended (not included).***

NOTE: ***Periodically check all hardware for tightness to ensure the longevity and safety of your bumper.***