



PART NUMBER: **N161MRDS**  
PRODUCT: **RDS BUMPER**  
APPLICATION: **16- C**  
**NISSAN TITAN**

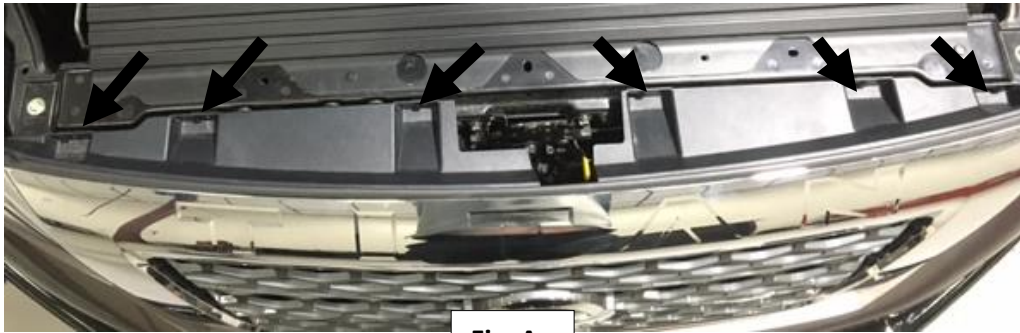
Parts Included:	QTY
RDS BUMPER	1



(Shown with a 40" curved LED)

## BUMPER REMOVEAL

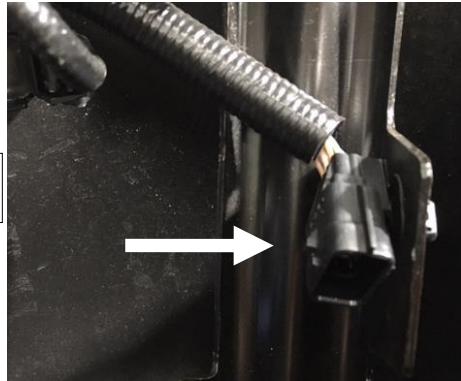
**Step 1:** Remove the OE grill by releasing the 10 retaining pins. There will be 6 located on the top of the grill and 4 in the face of the grill. (Fig. A)



**Step 2:** Unplug fog lights and sensors if so equipped. (Fig B)



Fig. B



**Step 3:** Remove the two bolts connecting the bumper brace to the frame. (Both sides) (Fig. C)

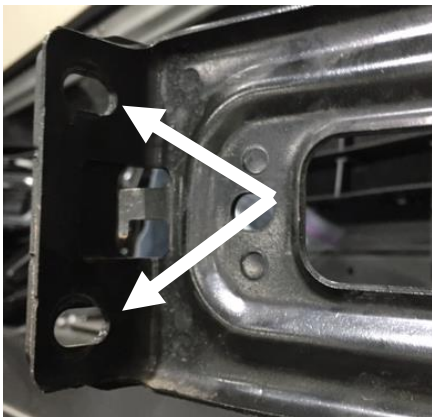
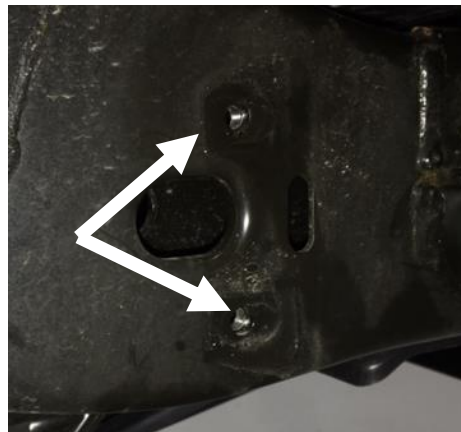


Fig. C

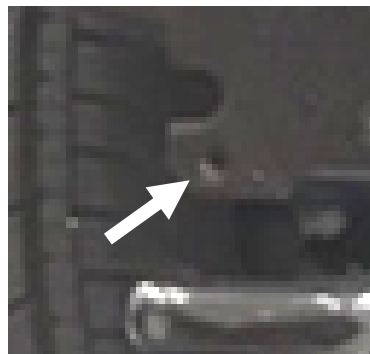


**Step 4:** Remove the screw that attaches the lower plastic cap to the bumper and remove (Both sides). Remove the lower bumper bolt (both sides). (Fig. D)

+



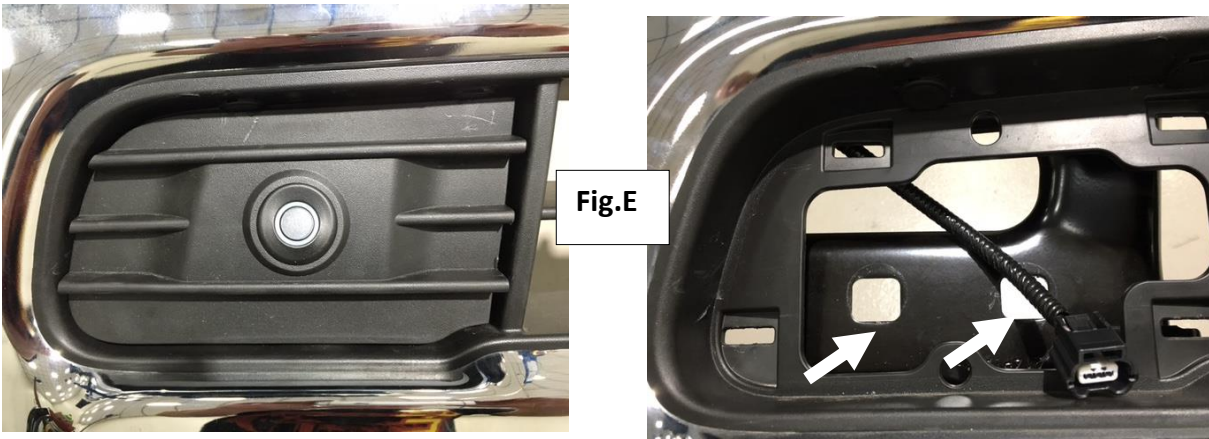
Fig. D



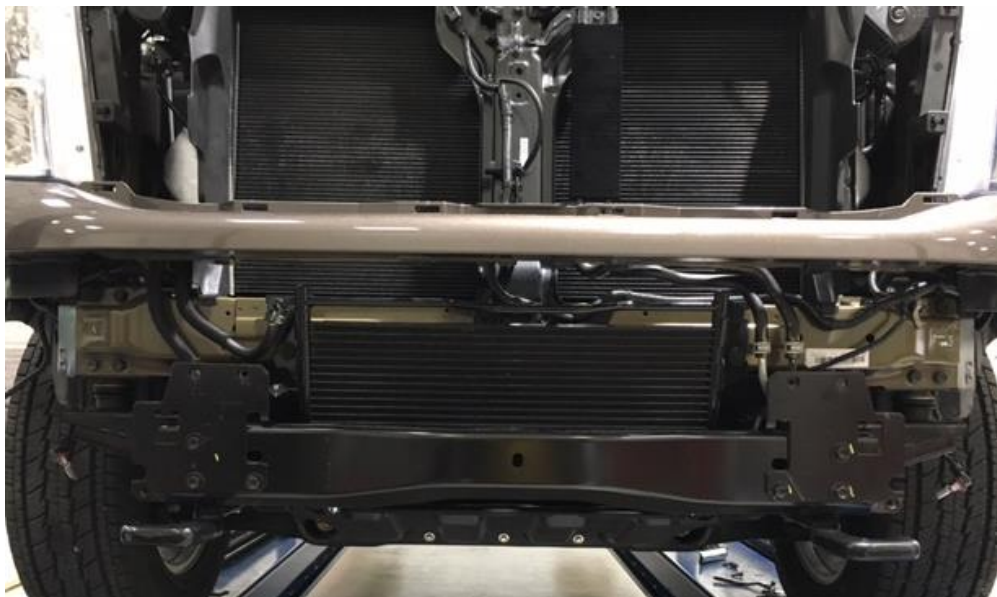


PART NUMBER: **N161MRDS**  
PRODUCT: **RDS BUMPER**  
APPLICATION: **16- C**  
**NISSAN TITAN**

**Step 5:** Remove the two bumper inserts to access the upper bolts. (Both sides) (Fig. E)



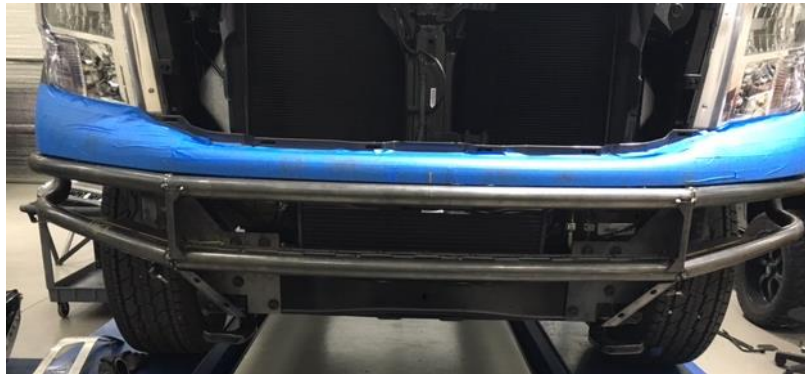
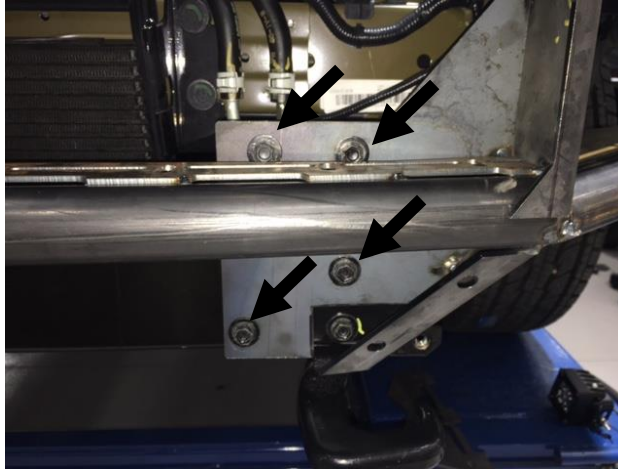
**Step 6:** Remove the four bumper bolts and carefully remove the bumper and set aside.



## RDS Bumper Install

**Step 1:** Remove the skid plate from the RDS bumper and set aside.

**Step 2:** Carefully lift RDS bumper into place aligning the brackets to the OE frame mounts. Using the factory bolts install the RDS bumper leaving the hardware loose. **(Fig. A)**



**Step 3:** After final adjustment, tighten all hardware.

**Step 4:** Next, re-install the skid plate and fully tighten. ***NOTE: depending on the application, it may be easier to install lights before mounting the skid plate.***

**Step 5:** Re-install OE grill using the factory hardware.





PART NUMBER: **N161MRDS**

PRODUCT: **RDS BUMPER**

APPLICATION: **16- C**

**NISSAN TITAN**